



WORLD'S BEST  
ALLOY BULLBARS

East Coast Bullbars (ECB Pty Ltd)

Tel: 07 3897 5700

Fax: 07 3283 1168

ecb@ecb.com.au www.ecb.com.au

29 Snook St  
Clontarf QLD 4019  
Australia

Po Box 122  
Margate QLD 4019  
Australia

**NB6M111SY**

REPLACES: 00.00.00  
REVISED: 06.10.16

## FITTING INSTRUCTIONS

### PAJERO SPORT 01/16- 63mm SERIES 2 NUDGE BAR VEHICLE FRONTAL PROTECTION SYSTEM (VFPS) FOR AIR BAG & ADR COMPLIANT VEHICLES

Check installation hardware before commencing.

1. Remove two 12mm head bolts from front of stone tray, loosen rear two bolts and remove stone tray from vehicle.
2. Fit 58mm tube spacer and 3/8 x 4 bolt and flat washer (supplied) into rail on each side as shown in **figure 1**.
3. Drill 25mm hole through passenger side chassis as shown in **figure 2**. **Blow filings clear and treat all exposed metal with a rust inhibitor.** Fit 3/8 x 2 bolt, spring washer and flat washer (supplied) through the drilled hole and out the existing hole. Slide 30mm spacer tube (supplied) onto the bolt.
4. Fit ECB steel mounting brackets (supplied) onto outside of chassis rail using supplied 3/8 flat washer, spring washer and nut (supplied) in rear hole. Use 3/8 x 4 bolt, flat washers, 58mm tube spacer, spring washer (supplied) and nut in middle hole used in step 2. M10 x 1.25 x 30mm bolt, spring washer and flat washer (supplied) in front hole.
5. Align mounts to front of vehicle and **TIGHTEN ALL BOLTS**. See **figure 3**.
6. Remove top cover of grille. Twelve plastic clips along top and gently pull up.
7. Remove two push pull clips behind grille. Pull grille directly outwards to release two white clips and undo camera plug, place grille away. See **figures 4 and 5**
8. Lever clips around the outside of the lower grille while putting slight pressure onto it to pull it forward slightly.
9. Pull sensor clips apart gently and remove both sensors from the grille. See **figure 6**
10. Using the steel upper mount as a guide cut a slot into the front of the bumper. See **figure 7**. **CAUTION: There is a wiring loom behind this which needs to be held away while cutting.**
11. Remove the 10mm head bolt shown in **figure 8** and loosely bolt the upper steel mount into the hole using the M10x35mm bolt supplied. Repeat for the other side.
12. Remove the camera set up (if fitted to the vehicle) from under the badge on the top grille. See **figure 9**
13. Using the supplied number plate adapter as a template, mark the hole in the bottom grille for relocating the camera system.
14. Cut out a hole which will fit the camera and feed the wiring through.
15. Attach the numberplate adapter to the front of the grille, securing the camera system in place. See **figure 10**



East Coast Bullbars (ECB Pty Ltd)

Tel: 07 3897 5700

Fax: 07 3283 1168

ecb@ecb.com.au www.ecb.com.au

29 Snook St  
Clontarf QLD 4019  
Australia

Po Box 122  
Margate QLD 4019  
Australia

**WORLD'S BEST  
ALLOY BULLBARS**

16. Refit the lower grille
17. Fit ECB protection bar onto outside of lower steel mounting brackets using M10 x 1.25 x 40mm bolts, flat washers, spring washers and nuts (supplied) in rear hole per side. Fit M10 x 1.25 x 40mm bolt and washer on wire, flat washer, spring washer and nut (supplied) in front hole per side. **See figure 11.**
18. Align protection bar to front of vehicle. See **figures 12** for front view and **figures 13** for side view.
19. Fit M10 x 1.25 x 30mm bolt, washer, spring washer and nut (supplied) through the top mount on each side of the bar. **See figure 14**
20. **Tighten all bolts.**
21. Attach the parking sensors to the mounts in the bar as they were attached to the bumper. CAUTION: The plastic clips are directional, make sure the clip marked UP is on top.
22. Test parking sensors
23. Refit the top grille and cover in reverse of steps 5-7 and stone tray in reverse of step 1.

**ENSURE NUMBER PLATE IS CLEARLY VISABLE**

**Note:** When fitting/refitting the licence plate to the vehicle, ensure there is no obstruction to licence plate vision in accordance with local authorities. If required relocate licence plate to an alternate location.

**Further VFPS Notes:**

- a) Do not attach VFPS to the vehicle using anchorages not intended for this purpose (e.g. engine mounting bolts).
- b) Do not use this product for any vehicle make or model, other than those specified by the VFPS manufacturer.
- c) Do not remove the plaque or label from the VFPS.
- d) Do not modify the structure of the VFPS in any way.
- e) No accessory or fitment should project forward of the VFPS forward profile.
- f) **ENSURE THESE INSTRUCTIONS ARE LEFT WITH VEHICLE OWNER AND/OR OPERATOR.**

**IMPORTANT INFORMATION**

Periodically check bolts and nuts for correct tightness, especially if travelling on rough roads.

**FITTING KIT**

1 – Drivers mounting bracket	2 – M10 x 1.25 x 40mm bolt and washer on 300mm wire
1 – Passenger mounting bracket	12 – M10 Spring washers
1 – Pair of upper steel mounts	24 – M10 flat washers
1 – Number plate adapter	7 – M10 x 1.25 nuts
2 – 3/8 x 4 bolts	2 – Tube spacers 10NB x 58 mm
1 – 3/8 x 2 bolt	1 – Tube spacer 10NB x 30 mm
3 – 3/8 nuts	2 – M6 x 20 bolts
2 – M10 x 1.25 x 40mm bolts	2 – M6 flat washers
3 – M10 x 1.25 x 30mm bolts	



East Coast Bullbars (ECB Pty Ltd)

Tel: 07 3897 5700

Fax: 07 3283 1168

ecb@ecb.com.au www.ecb.com.au

29 Snook St  
Clontarf QLD 4019  
Australia

Po Box 122  
Margate QLD 4019  
Australia

WORLD'S BEST  
ALLOY BULLBARS



Figure 1

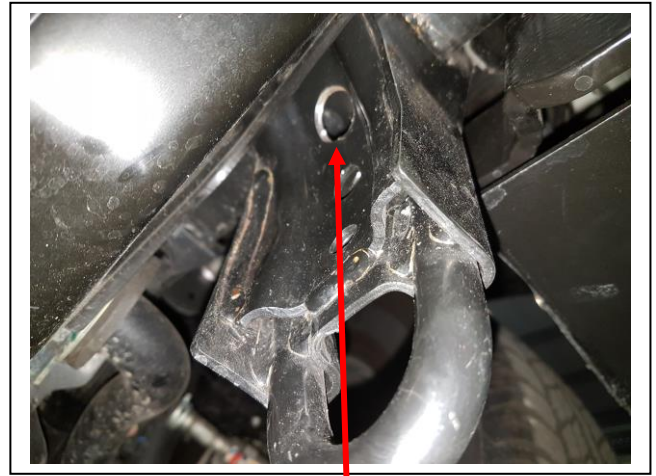


Figure 2: 25mm hole



Figure 3

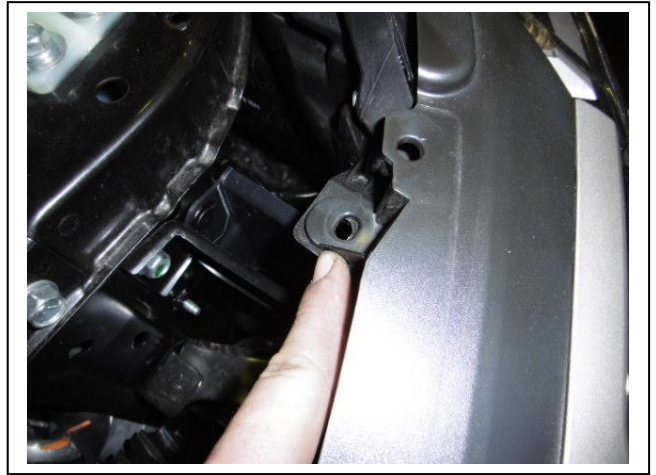


Figure 4

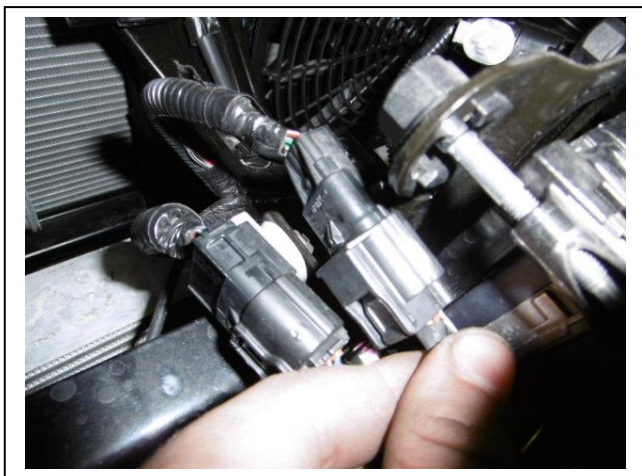


Figure 5: Unplug camera and other looms

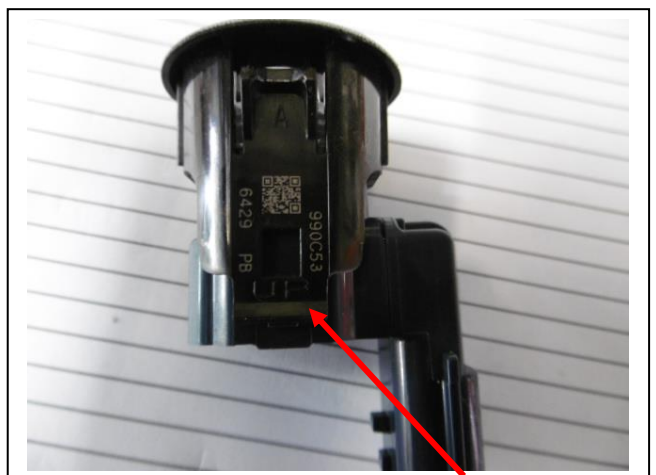


Figure 6: Clips holding sensor in place



East Coast Bullbars (ECB Pty Ltd)

Tel: 07 3897 5700

Fax: 07 3283 1168

ecb@ecb.com.au www.ecb.com.au

29 Snook St  
Clontarf QLD 4019  
Australia

Po Box 122  
Margate QLD 4019  
Australia

WORLD'S BEST  
ALLOY BULLBARS

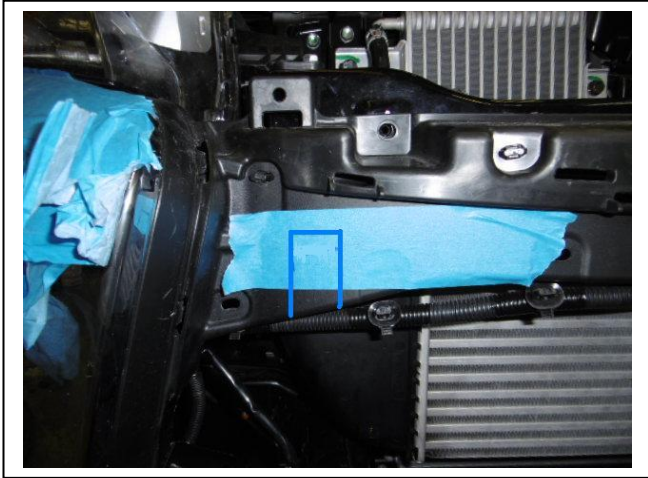


Figure 7

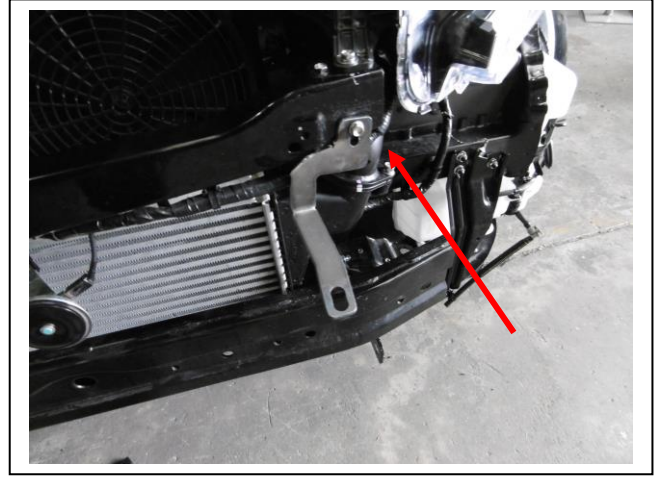


Figure 8



Figure 9



Figure 10



Figure 11



Figure 12



**WORLD'S BEST  
ALLOY BULLBARS**

**East Coast Bullbars (ECB Pty Ltd)**

Tel: 07 3897 5700

Fax: 07 3283 1168

ecb@ecb.com.au www.ecb.com.au

29 Snook St  
Clontarf QLD 4019  
Australia

Po Box 122  
Margate QLD 4019  
Australia



**Figure 13**



**WORLD'S BEST  
ALLOY BULLBARS**

**East Coast Bullbars (ECB Pty Ltd)**

Tel: 07 3897 5700

Fax: 07 3283 1168

[ecb@ecb.com.au](mailto:ecb@ecb.com.au) [www.ecb.com.au](http://www.ecb.com.au)

29 Snook St  
Clontarf QLD 4019  
Australia

Po Box 122  
Margate QLD 4019  
Australia



East Coast Bullbars (ECB Pty Ltd)

Tel: 07 3897 5700

Fax: 07 3283 1168

ecb@ecb.com.au www.ecb.com.au

29 Snook St  
Clontarf QLD 4019  
Australia

Po Box 122  
Margate QLD 4019  
Australia

WORLD'S BEST  
ALLOY BULLBARS

**We value your comments**

Dear Fitter,

ECB would like to know how you went with the installation of this product. We value your comment and may need to contact you to clarify some details so please complete your contact details clearly.

We would appreciate if you could complete as many of the following details as possible.

<b>Your Name:</b>	<b>Your contact No.</b>
<b>Product Part No.</b>	<b>Product Invoice No.</b>
<b>Product Description:</b>	<b>Make, model, and year of vehicle:</b>
<b>Product Work Order No.</b>	<b>Company your from/Company product purchased from:</b>

**Date of fitment:** \_\_\_/\_\_\_/\_\_\_

Was the fitting hardware supplied complete?

Yes

No

If no what was not supplied

---

---

Did the installation go well?

Yes

No

Please provide comments

---

---

---

Please draw diagrams if you need to.

**Post to**  
Reply Paid 122  
PO Box 122  
Margate QLD 4019

**Fax to**  
(07) 3283 1168



**WORLD'S BEST  
ALLOY BULLBARS**

**East Coast Bullbars (ECB Pty Ltd)**

Tel: 07 3897 5700

Fax: 07 3283 1168

[ecb@ecb.com.au](mailto:ecb@ecb.com.au) [www.ecb.com.au](http://www.ecb.com.au)

29 Snook St  
Clontarf QLD 4019  
Australia

Po Box 122  
Margate QLD 4019  
Australia





WORLD'S BEST  
ALLOY BULLBARS

East Coast Bullbars (ECB Pty Ltd)

Tel: 07 3897 5700

Fax: 07 3283 1168

ecb@ecb.com.au www.ecb.com.au

29 Snook St  
Clontarf QLD 4019  
Australia

Po Box 122  
Margate QLD 4019  
Australia

## DESPATCH CHECKLIST NB6M111SY

Work Order #		<b>See other side of this page for photos of all mounts</b>
Finish:		
Transport:		
Due Date:		

- OC..... 1 – Drivers side steel mounting bracket.
- OC..... 1 – Passengers side steel mounting bracket.
- OC..... 1 – Pair upper steel mounting brackets.
- OC..... 1 – Number plate adaptor
- BK..... 1 – Bolt Kit.



Is this product “the best it can be” Yes \_\_\_\_\_ / \_\_\_\_\_  
Wrapper’s initials / Checker initials

If **NO** fix before continuing

All parts checked and completed by:

Nut and bolts: \_\_\_\_\_ Date \_\_\_/\_\_\_/\_\_\_

Order control: \_\_\_\_\_ Date \_\_\_/\_\_\_/\_\_\_

Final wrap check: \_\_\_\_\_ Date \_\_\_/\_\_\_/\_\_\_



East Coast Bullbars (ECB Pty Ltd)

Tel: 07 3897 5700

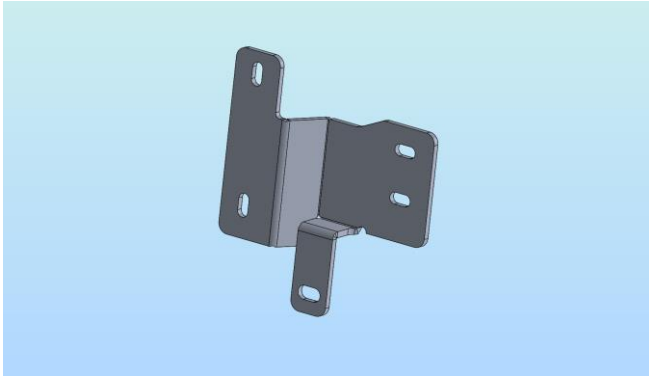
Fax: 07 3283 1168

ecb@ecb.com.au www.ecb.com.au

29 Snook St  
Clontarf QLD 4019  
Australia

Po Box 122  
Margate QLD 4019  
Australia

WORLD'S BEST  
ALLOY BULLBARS



Ensure the PASSENGER SIDE has a folded rear section.



Drivers side is NBM155SY mount



1 pair of upper mounts



Number plate adaptor